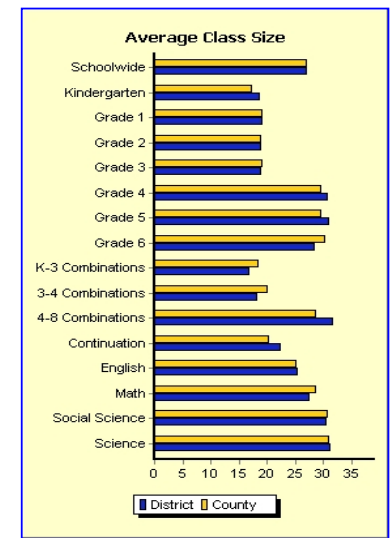
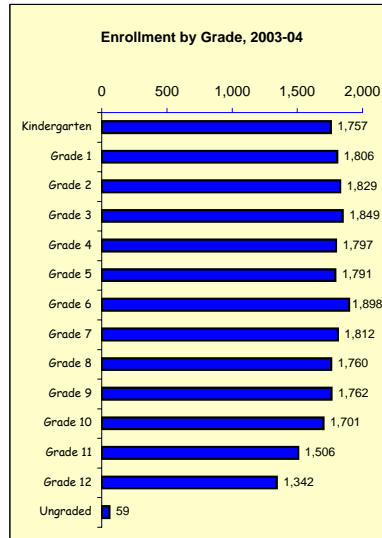
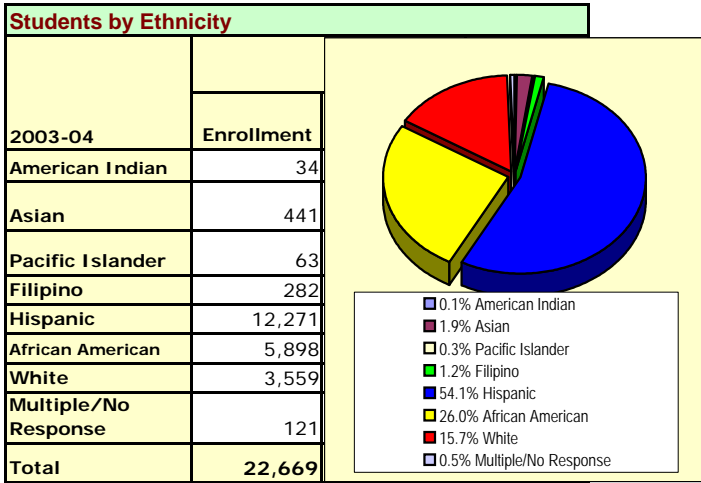
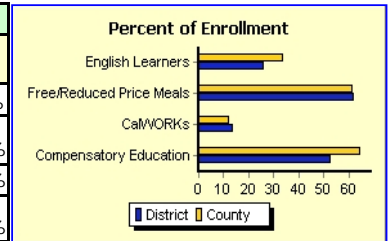


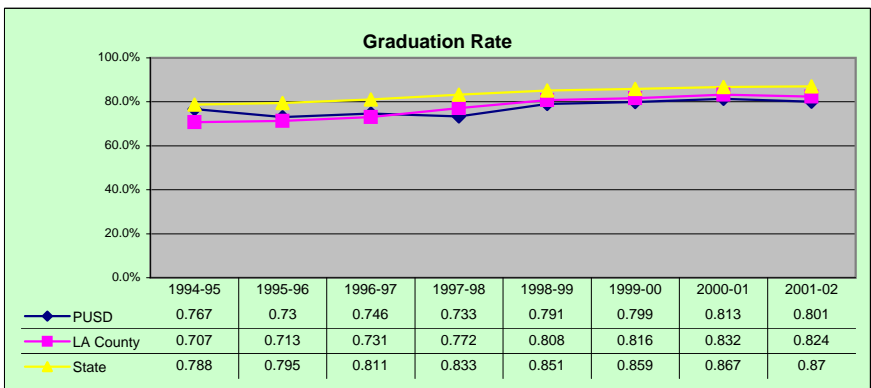
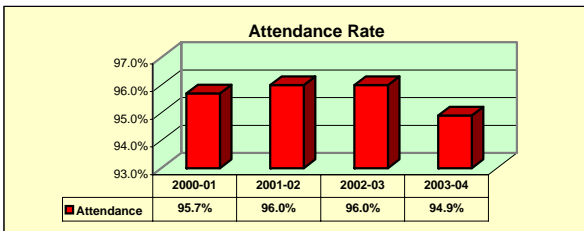
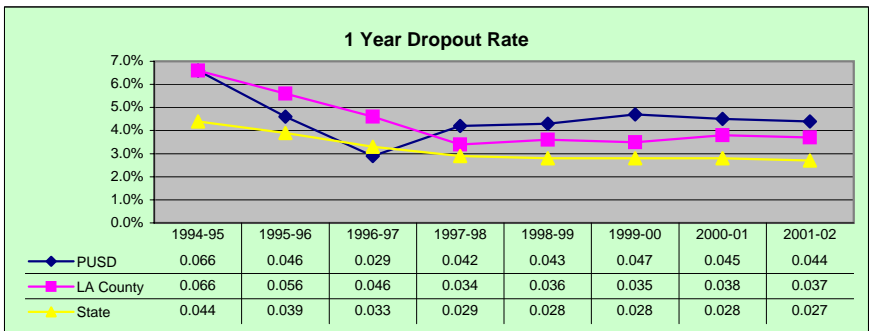
# Pasadena Unified School District Profile

Enrollment by School Type		
2003-04	Number of Schools	Enrollment
Elementary	24	12,337
Middle	3	3,155
High School	4	6,901
Continuation	1	276
<b>Total</b>	<b>32</b>	<b>22,669</b>

Demographics: Special Programs		
2002-03	Participants	Percent of Enrollment
English Learners	6,160	26.5%
Free/Reduced Price Meals	14,482	62.4%
CalWORKs	3,273	14.1%
Compensatory Education	12,352	53.1%
Special Education	2,622	11.3%



Languages of English Learner Students		
2002-03	Number of Students	Percent of Enrollment
Spanish	5,716	24.6%
Armenian	216	0.9%
Other Non-English	41	0.2%
Pilipino (Tagalog)	35	0.2%
Korean	25	0.1%
All Other	127	0.5%
<b>Total</b>	<b>6,160</b>	<b>26.5%</b>



Certificated Staff		
2003-04	Number of Staff	Full-Time Equivalents
Administrators	79	81.0
Pupil Services	85	80.6
Teachers	1,090	1078.4
<b>Total</b>	<b>1254</b>	<b>1240.0</b>

Teaching Credentials		
2003-04	Number of Credentials	Percent of Total
Full Credential	860	78.8%
University Intern	46	4.2%
District Intern	6	0.5%
Pre-Intern	82	7.5%
Emergency	101	9.2%
Waiver	10	0.9%
<b>Total</b>	<b>1,092</b>	<b>100%</b>

Teachers by Ethnicity	
2003-04	# Teachers
American Indian	3
Asian	49
Pacific Islander	1
Filipino	10
Hispanic	200
African American	192
White	614
Multiple/No Response	21
<b>Total</b>	<b>1,090</b>

